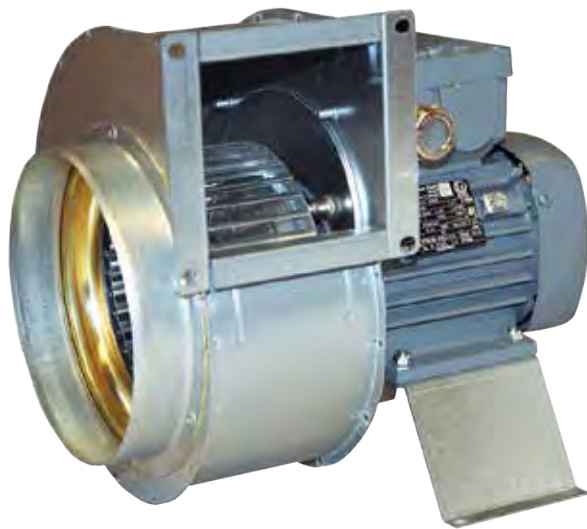


EXPROOF FANS



DAX-EX EX-PROOF AXIAL FANS

DYNFLOW Ex-proof ATEX Certified Axial Fans are used in petro-chemical plants, sewage treatment and painting applications which have a hazardous environment. The best matching fan is supplied in the wide range by selecting several fan and hub combinations and adjustable blades.

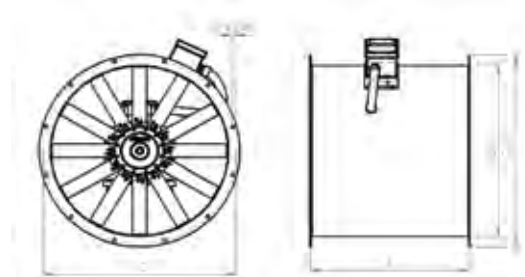
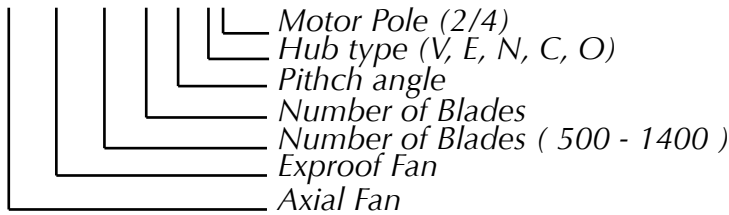


Features and Benefits:

- Compliance with ATEX 2014/34/EU, EN 14986 : 2017, EN 60079-0 : 2013, EN 13463-1 : 2009, EN 13463-5 : 2011 Standards.
- Full size from Ø 500 mm to Ø 1400 mm diameter.
- Hot deep galvanized sheet metal fan casing.
- Cast aluminum adjustable blade angle impellers.
- Aerodynamic profile impellers allow high efficiency and low noise.
- Die cast aluminum alloy fan hubs.
- Optimum capacity obtained hub and blade combinations besides adjustable blade angle.
- Ex-proof certified IP 65 electrical terminal box which is carried out of the casing.
- Ex d IIB T4 electrical motors with IP 55 and F class insulation.
- 230 V, 1 phase, 50 Hz and 400 V, 3 phase, 50 Hz.
- Operating temperature between -20°C and 40°C .

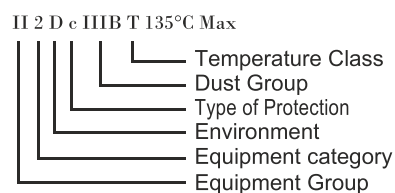
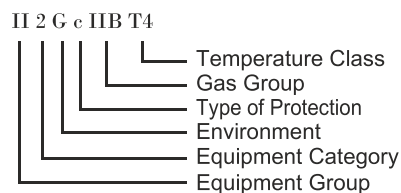
TECHNICAL SPECIFICATIONS

DAX - EX- 560-5/20-V2



FAN	Motor frame	ØA	ØB	ØC	D x ØE	F
500	90	500	585	560	12xØ12	450
	100					570
560	90	560	645	620	12xØ12	450
	100-112					570
630	90	630	715	690	12xØ12	450
	100-112					570
	132					710
710	90	710	795	770	16xØ12	450
	100-112					570
	132					710
	160					790
800	90	800	885	860	16xØ12	450
	100-112					570
	132					710
	160-180					790
	200					840
900	90	900	1000	970	16xØ12	450
	100-112					570
	132					710
	160-180					790
1000	90	1000	1110	1070	16xØ15	450
	100-112-132					590
	160-180					790
	200					840
1120	100-112-132	1120	1240	1190	20xØ15	590
	160-180					790
	200					840
	225					1000
1250	100-112-132	1250	1380	1320	20xØ15	590
	160-180					790
	200					840
	225					1000
	250					1100
1400	132	1400	1540	1470	20xØ15	590
	160-180					790
	200					840
	225					1000
	250					1100

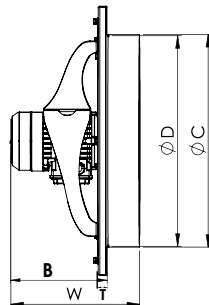
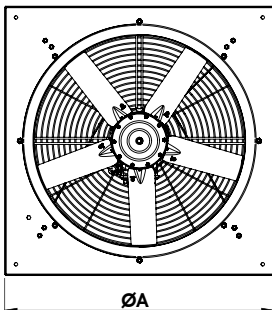
PRODUCT MARKING



DD-EX EXPLOSION PROOF WALL MOUNTED AXIAL FANS

- 7 standard sizes from Ø 315 – Ø 630 mm.
- Easy mounting and installation.
- Galvanized coated casing and aluminum inlet cone.
- Die cast aluminum alloy fan hubs.
- IP 66 Electrical motors with F-class insulation.
- Power Supply: 400 Volt – 3 Phase – 50Hz.
- Operating Temperature between -20°C and +60°C.

Static Pressure (Pa)	Air Flow (m ³ /h)						
	DD - EX 315	DD - EX355	DD - EX 400	DD - EX 450	DD - EX 500	DD - EX560	DD - EX 630
0	1130	2317	4225	7311	8932	12420	18062
25	980	2060	3979	6660	8510	11900	17363
50	640	1680	3705	6311	8049	11340	16622
75			3386	5665	7534	10726	15829
100				4996	6941	10044	14966
125					6221	9268	14004
150							12887
175							11472
200							8773

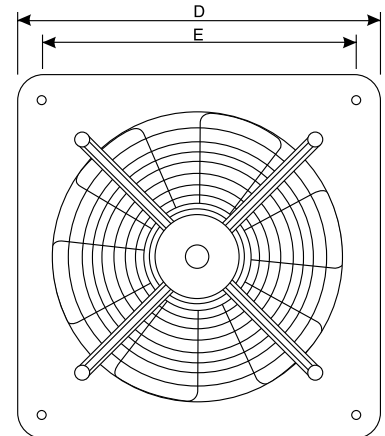
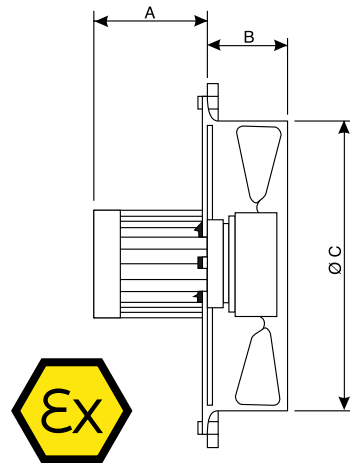


II 2G Ex db eb IIC T3 ~ T5 Gb
 II 2G Ex h IIC T3 ~ T5 Gb
 II 2G Ex tb eb IIIC T 125 °C Db

Model	Power (KW)	Current (A)	voltage (V)	A mm	B mm	ØC mm	ØD mm	w mm	T mm
DD - EX 315	0.12	0.71	400	450	195	319	315	270	20
DD - EX 355	0.18	0.76	400	490	195	359	355	270	20
DD - EX 400	0.25	0.84	400	535	210	404	400	295	20
DD - EX 450	0.37	1.20	400	585	210	454	450	295	20
DD - EX 500	0.55	1.75	400	655	265	504	500	345	20
DD - EX 560	0.75	2.1	400	715	265	564	560	345	20
DD - EX 630	1.5	3.30	400	795	280	634	630	400	20

EB EX EXPLOSION PROOF WALL TYPE AXIAL FANS

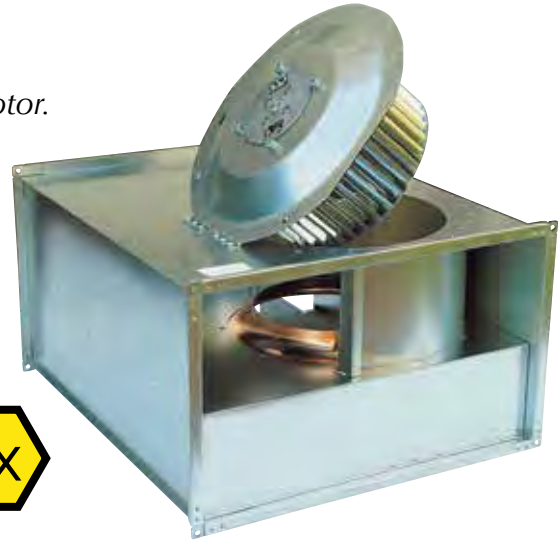
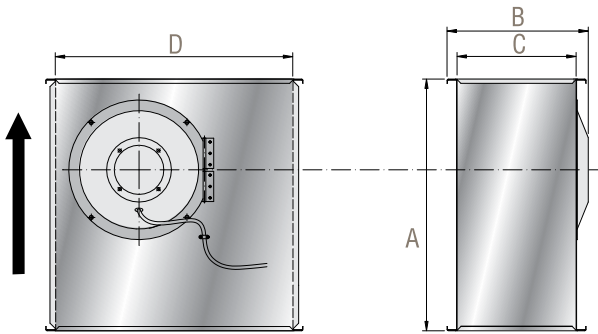
- Powder coated galvanized steel body.
- EEX e II protection class.
- T4 temperature Class.
- ATEX certified fans.
- IP 55 class, three phase motor.



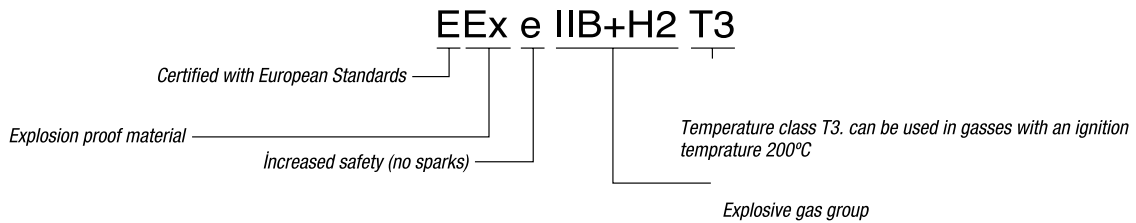
MODEL	Capacity (m ³ /h)	Max. Pressure Loss (Pa)	Current (A)	Power (W)	Voltage (V)	RPM	Weight (kg)	A (mm)	B (mm)	C (mm)	D (mm)	E (mm)
EB 25 4T	900	10	0.39	100	400	1460	9	195	70	260	340	290
EB 30 4T	1500	9	0.40	125	400	1430	10	195	70	312	390	340
EB 35 4T	2250	10	0.42	150	400	1400	11	196	85	365	460	410
EB 40 4T	2900	9	0.43	180	400	1350	11.5	196	85	415	510	460
EB 50 4T	4500	14	0.45	230	400	1270	13.5	196	90	515	630	580

RKX DUCT TYPE EXPLOSION ROOF FANS

- Galvanised steel casing.
- EEX e IIB + H2 T3 protection class.
- The product is ATEX - certified.
- Speed control between 25% and 100%.
- Three phase, class IP 44 protected external rotor motor.
- Non - sparking inlet cone made from brass.
- Easy service and cleaning with the hinged cover.



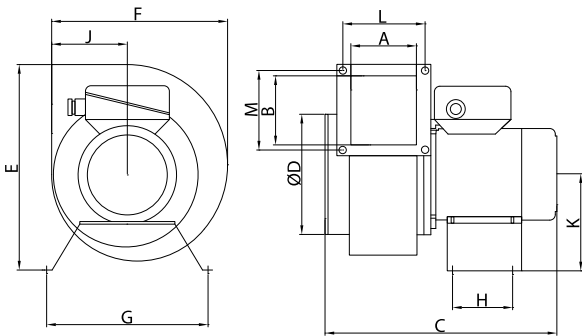
Static Pressure (Pa)	Air Flow (m ³ /h)				
	RKX 500x250 D3	RKX 500x300 B3	RKX 600x300 F3	RKX 600x350 E3	RKX 700x400 B3
50		2534			4716
100	1800	2422			4475
150	1686	2298		4168	4205
200	1553	2157	3148	4028	3892
250	1388	1991	2997	3878	3514
300	1155	1786	2821	3713	3016
350		1501	2609	3529	
400			2330	3321	
450			1861	3077	
500				2772	



MODEL RKX	Voltage (V)	Current (A)	Power (kW)	RPM	Max. Temp. (°C)	Sound Level dB(A)@3m	Weight (kg)	A (mm)	B (mm)	C (mm)	D (mm)
500x250 D3	400	0.92	0.5	1285	40	56	18	532	314	250	500
500x300 B3	400	1.54	0.8	1239	40	55	22	562	364	300	500
600x300 F3	400	3.05	1.5	1343	40	60	32	642	364	300	600
600x350 E3	400	4.00	2.0	1375	40	61	43	717	414	350	600
700x400 B3	400	2.50	1.4	799	40	55	50	787	468	400	700

RFTX EXPLOSION PROOF RADIAL SINGLE INLET FANS

- Galvanised steel casing.
- EEX e IIB + H2 T3 protection and T3 temperature class.
- The product is ATEX-certified.
- Three phase, IP55 class motor protection.



Static Pa	AirFlow (m ³ /h)												
	0	50	100	150	175	200	225	250	275	300	325	350	400
RFTX 140 C					670	652	634	615	597	573	551	525	463
RFTX 200 B	1245	1169	1075	969	910	844	762	645					
RFTX 200 C				1370	1320	1232	1128	1010	810				

MODEL	Current (A)	Power (W)	Voltage (V)	RPM	Weight (kg)	A (mm)	B (mm)	C (mm)	D (mm)	E (mm)	F (mm)	G (mm)	H (mm)	J (mm)	K (mm)	L (mm)	M (mm)
RFTX 140 C	0.53	300	400	2810	7.3	94	90	284	159	266	218	193	71	98	122	117	105
RFTX 200 B	0.79	388	400	1380	10.7	89	156	312	199	399	320	262	80	135	169	109	250
RFTX 200 C	0.79	385	400	1380	11	119	156	342	199	399	320	262	80	135	169	109	250
Speed Controller	By using variable frequency drive																