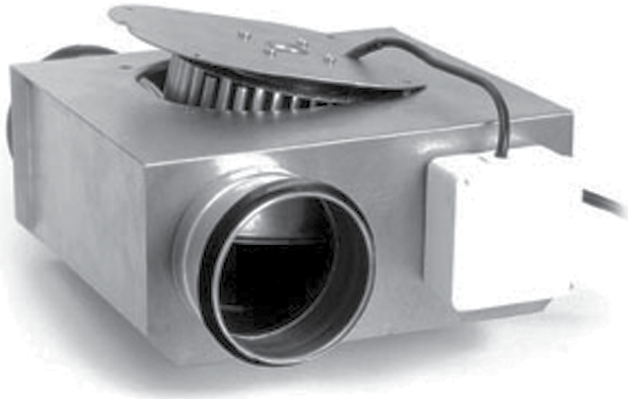
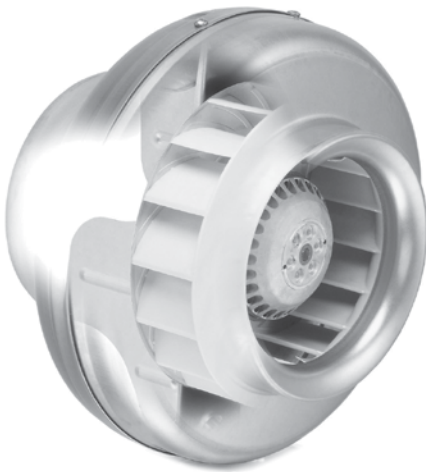
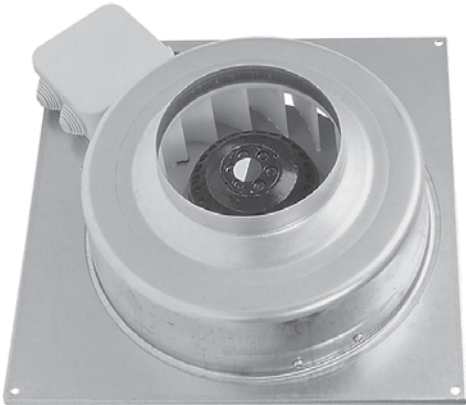
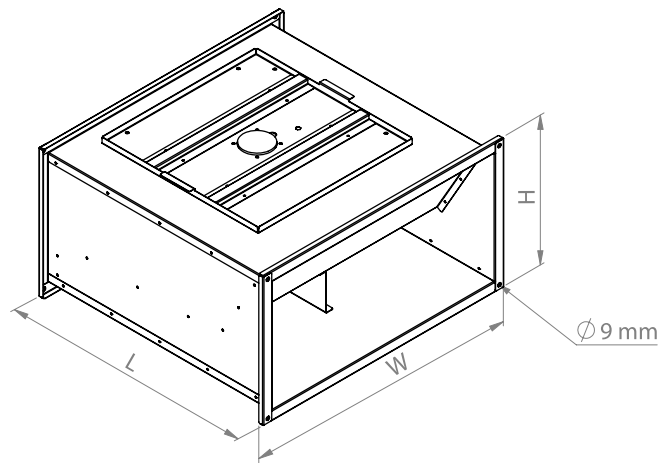


DUCT TYPE FANS

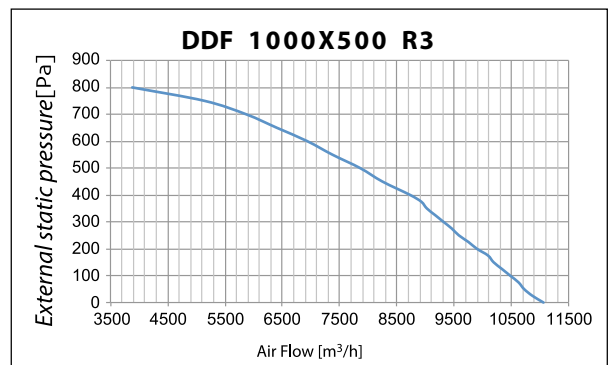
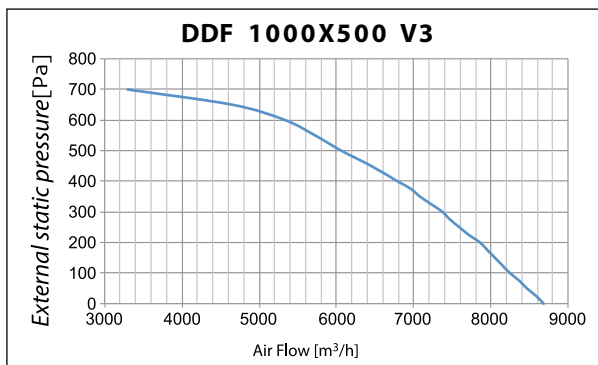
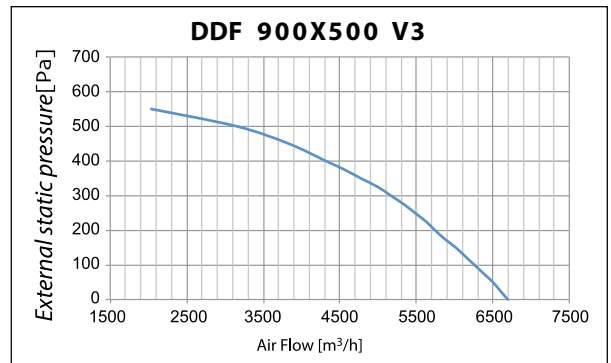
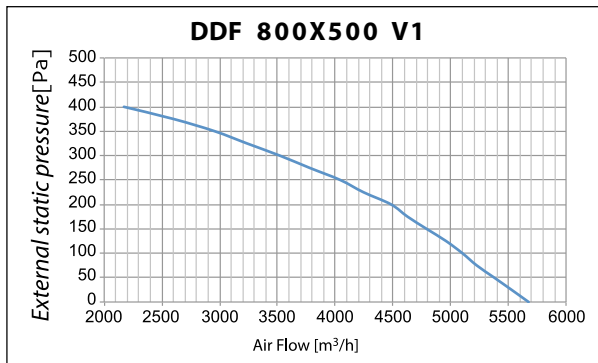
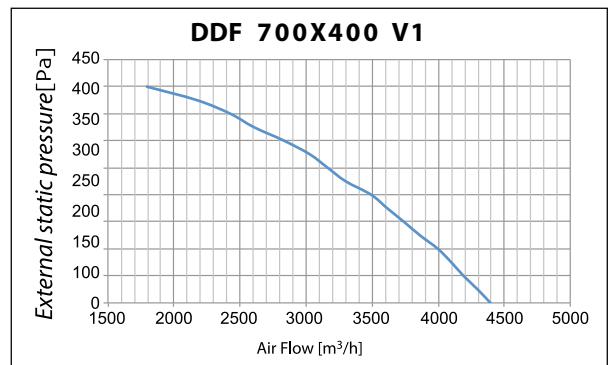
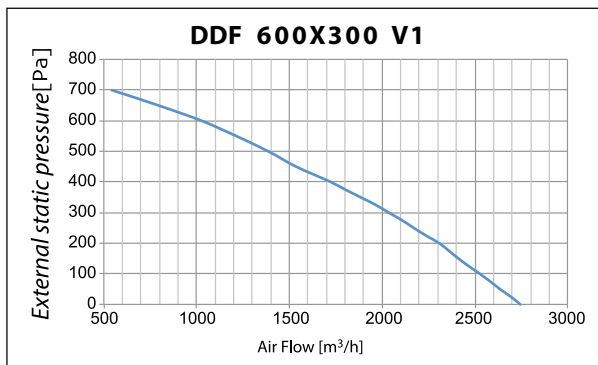
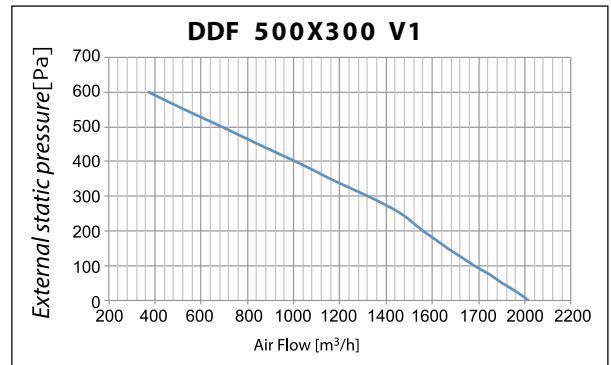
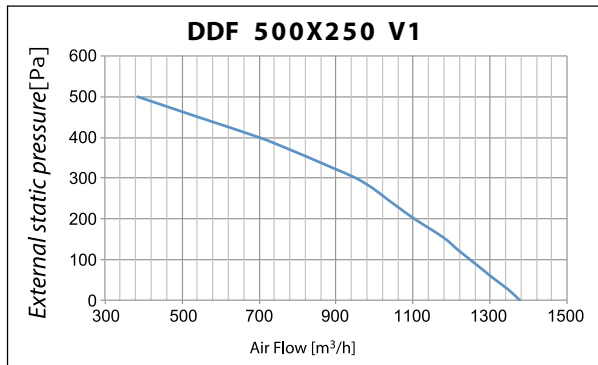


DDF RECTANGULAR DUCT TYPE FANS

- Galvanized steel casing.
- Backward curved impeller directly coupled to external rotor motor.
- Easy installation with flange connection.
- IP 44 motor with F-class insulation.
- IP 67 electrical connection box.
- Accessible impeller and motor for service and maintenance
- Several installation angle and positions.
- Options: Speed Controller.



Model	DDF 500X250 V1	DDF 500X300 V1	DDF 600X300 V1	DDF 700X400 V1	DDF 800X500 V1	DDF 900X500 V3	DDF 1000X500 V3	DDF 1000X500 R3
Specification								
Voltage (V)	230	230	230	230	230	400	400	400
Power (kW)	0.21	0.23	0.5	0.51	0.8	1.1	1.5	2.12
Current (A)	1.05	1.1	2.25	1.5	3.5	2.5	2.6	3.9
rpm	2700	2450	2300	1380	1350	1400	1400	1355
Weight (kg)	~16	~18	~20	~37	~53	~62	~80	~81
Speed Cont.	VSC 1	VSC 1	VSC 5	VSC 5	VSC 5	VSC 2T	VSC 4T	VSC 4T
W (mm)	550	550	650	750	850	950	1050	1050
H (mm)	300	350	350	420	550	550	550	550
L (mm)	586	605	606	792	930	1000	1000	1000





Model \ Static Pressure (Pa)	DDF 500X250 V1	DDF 500X300 V1	DDF 600X300 V1	DDF 700X400 V1	DDF 800X500 V1	DDF 900X500 V3	DDF 1000X500 V3	DDF 1000X500 R3
	Air Volume (m ³ /h)							
0	1462	1753	2756	4275	5872	6839	9228	11063
25	1433	1708	2704	4192	5715	6732	9110	10897
50	1404	1658	2648	4103	5545	6620	8983	10745
75	1372	1607	2591	4010	5372	6504	8848	10601
100	1340	1557	2535	3913	5204	6385	8703	10460
125	1305	1509	2479	3812	5041	6262	8549	10322
150	1269	1461	2424	3708	4883	6136	8385	10185
175	1230	1414	2369	3602	4727	6007	8210	10046
200	1189	1366	2312	3493	4570	5875	8025	9907
225	1146	1317	2254	3379	4410	5739	7829	9765
250	1098	1265	2194	3262	4244	5599	7622	9620
275	1045	1208	2130	3140	4069	5453	7404	9472
300	986	1144	2061	3011	3880	5300	7173	9319
325	917	1069	1988	2876	3673	5138	6929	9163
350	836	978	1911	2733	3442	4965	6671	9002
375	739	871	1830	2580	3178	4778	6397	8836
400	627	760	1747	2418	2873	4573	6105	8664
450	410	583	1582	2058	2103	4092	5463	8303
500	229	449	1422	1621		3483	4738	7916
550	61	334	1261	1011		2738	3936	7499
600		225	1087			1852	3076	7041
650		115	879			692	2164	6525
700			632				1187	5913
750								5115
800								3953

RK (B) RECTANGULAR DUCT TYPE FANS

- Full range of 9 models with 6 different cross sections.
- RK Model – Forward curved galvanized steel impeller.
- RKB Model – Backward curved aluminum impeller.
- Special design with minimal air turbulence, high efficiency, high operating pressure and low noise level.
- Galvanized steel casing which allows several installation angles and positions.
- Impeller is installed on a hinged heavy steel access panel to provide easy service and maintenance.
- Designed to work in humid environment with IP 44 protection class external rotor motor.
- IP 54 electrical connection box.
- Motors are equipped with thermic protection.
- Maintenance free bearing.
- Options: speed controller.



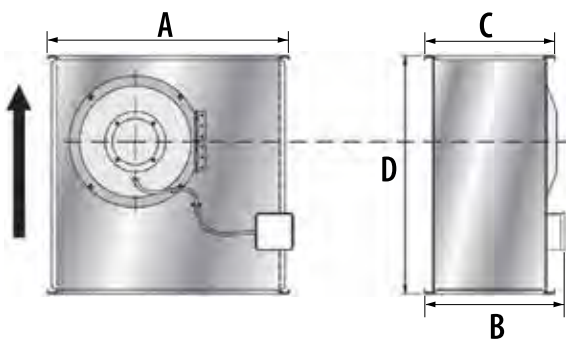
RKB
Backward curved
blades



RK
Forward curved
blades



RK
Forward curved
blades

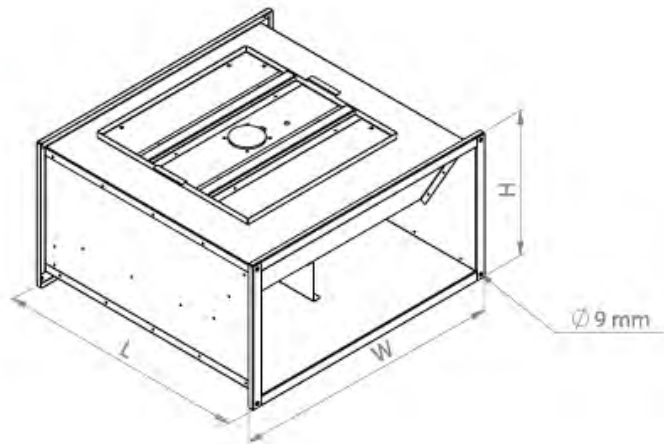


Static Pressure (pa)	AirFlow (m ³ /h)								
	RK 500x300 B1	RK 500x300 B3	RK 600x300 F3	RK 600x350 D3	RK 600x350 E3	RK 700x400 E3	RK 700x400 D3	RKB 800x500 K3	RKB 1000x500 L3
0			3875	3544		5832	6332	9535	12455
25			3813	3445		5686	6285	9406	12332
50			3740	3340		5538	6224	9268	12180
75			3671	3230		5401	6174	9142	12040
100			3595	3120		5280	6108	9004	11876
125		2174	3520	3004		5128	6050	8870	11716
150		2115	3442	2886		5000	5988	8733	11548
175		2050	3360	2760		4865	5926	8593	11377
200	1989	1980	3275	2630		4730	5862	8448	11199
225	1932	1904	3185	2496		4605	5795	8297	11016
250	1868	1820	3092	2354	4390	4465	5728	8141	10828
275	1793	1722	2992	2204	4305	4335	5658	7977	10634
300	1700	1610	2884	2040	4214	4202	5585	7806	10436
325	1576	1475	2768	1870	4118	4052	5510	7627	10234
350	1371	1286	2638	1680	4016	3918	5432	7439	10028
375		890	2494	1470	3906	3760	5353	7242	9819
400			2324	1234	3788	3605	5268	7038	9606
450			1750	600	3516	3275	5090	6604	9171
500					3166	2906	4895	6143	8723
550					2626	2420	4676	5654	8261
600						1765	4424	5124	7780
650							4122	4510	7272
700							3732	3673	6724
750							3112	1367	6110
800									5372
850									4317
900									1117

MODEL	RK 500x300 B1	RK 500x300 B3	RK 600x300 F3	RK 600x350 D3	RK 600x350 E3	RK 700x400 E3	RK 700x400 D3	RKB 800x500 K3	RKB 1000x500 L3
<i>A(mm)</i>	562	562	642	717	717	787	787	912	1017
<i>B(mm)</i>	364	364	364	401	414	452	468	554	561
<i>C(mm)</i>	300	300	300	350	350	400	400	500	500
<i>D(mm)</i>	500	500	600	600	600	700	700	800	1000
<i>Voltage (V)</i>	230	400	400	400	400	400	400	400	400
<i>Current(A)</i>	3.25	1.45	3.10	0.82	3.00	2.44	6.80	3.69	4.90
<i>Power (kW)</i>	0.690	0.720	1.675	0.424	2.065	0.830	4.000	1.715	2.455
<i>rpm</i>	1275	1260	1305	1330	1355	1430	1375	1395	1348
<i>Max. Temp. (°C)</i>	40	40	45	60	40	40	55	55	55
<i>Sound Level (dBA@3m)</i>	55	55	58	55	61	59	67	64	65
<i>Speed Cont.</i>	RTE 3	RTR 2	RTR 4	RTR 2	RTR 4	RTR 2	RTR 7	RTR 4	RTR 7

DDF EC RECTANGULAR DUCT TYPE FANS

- Galvanized steel casing.
- Backward curved impeller directly coupled to external rotor motor.
- Easy installation with flange connection.
- IP 44 motor with F-class insulation.
- IP 67 electrical connection box.
- Accessible impeller and motor for service and maintenance
- Several installation angle and positions.
- Options: Speed Controller.

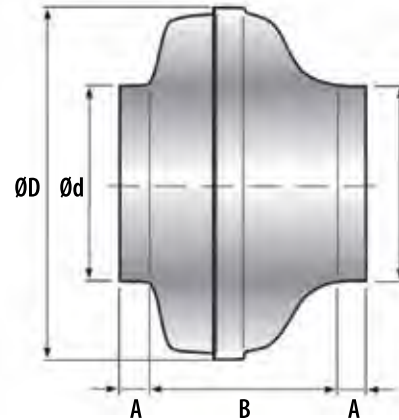


Model	DDF 400X200 V1 EC	DDF 500X250 V1 EC	DDF 500X300 V1 EC	DDF 600X300 V1 EC	DDF 700X400 V1 EC	DDF 800X500 V1 EC	DDF 900X500 V3 EC	DDF 1000X500 V3 EC	DDF 1000X500 R3 EC
Specification									
Voltage (V)	230	230	230	230	230	230	400	400	400
Power (kW)	0.103	0.17	0.5	0.47	0.78	0.5	1.5	1.8	3.1
Current (A)	0.91	1.45	2.5	2.0	3.9	2.2	2.4	2.9	5
rpm	3820	2860	3050	2550	2460	1500	2430	1800	1770
Weight (kg)	~14	~18	~20	~24	~45	~58	~69	~85	~90
W (mm)	450	550	550	650	750	850	950	1050	1050
H (mm)	250	300	350	350	450	550	550	550	550
L (mm)	476	586	605	606	792	930	1000	1000	1000

Model	DDF 400X200 V1 EC	DDF 500X250 V1 EC	DDF 500X300 V1 EC	DDF 600X300 V1 EC	DDF 700X400 V1 EC	DDF 800X500 V1 EC	DDF 900X500 V3 EC	DDF 1000X500 V3 EC	DDF 1000X500 R3 EC
Static Pressure (Pa)	Air Volume (m ³ /h)								
0 Pa	762	1410	2476	2990	4300	5715	6790	9080	14595
25 Pa	745	1385	2457	2946	4285	5607	6742	9022	14492
50 Pa	729	1348	2431	2899	4236	5455	6674	8939	14380
75 Pa	714	1310	2405	2856	4187	5295	6609	8857	14264
100 Pa	699	1274	2378	2816	4138	5125	6544	8773	14145
125 Pa	683	1232	2351	2776	4089	4950	6480	8689	14020
150 Pa	666	1202	2324	2737	4040	4780	6416	8605	13892
175 Pa	650	1172	2297	2697	3991	4625	6356	8519	13745
200 Pa	635	1145	2269	2656	3942	4465	6295	8431	13598
225 Pa	617	1115	2241	2614	3893	4295	6237	8342	13440
250 Pa	600	1080	2214	2570	3843	4115	6176	8252	13278
275 Pa	580	1035	2188	2524	3790	3935	6112	8162	13112
300 Pa	550	980	2162	2475	3734	3750	6046	8069	12941
325 Pa	530	932	2137	2423	3676	3550	5974	7975	12764
350 Pa	505	885	2110	2368	3618	3330	5895	7876	12584
375 Pa	465	828	2082	2309	3559	3105	5801	7773	12399
400 Pa	415	778	2052	2247	3498	2885	5684	7667	12211
450 Pa	320	674	1984	2112	3366	2473	5446	7440	11822
500 Pa	200	571	1908	1962	3224	2045	5204	7194	11397
550 Pa		481	1821	1795	3077	1620	4955	6939	10924
600 Pa		397	1722	1594	2913	1305	4634	6647	10386
650 Pa		329		1279	2708	995	4274	6298	9753
700 Pa		275		356	2470	620	3874	5931	9010
750 Pa		211			2192	240	1403	5513	8129
800 Pa							574	4934	7043

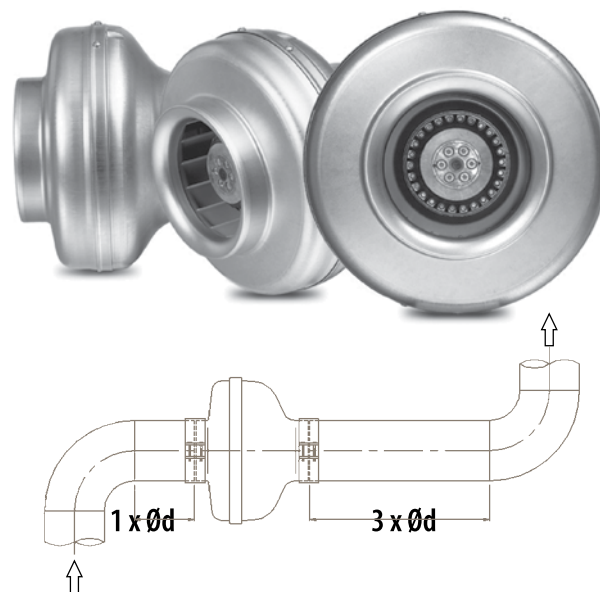
CK CIRCULAR DUCT TYPE FANS

- 11 different models with 6 different sizes from Ø100 mm to Ø315 mm diameters.
- High efficiency and maintenance-free operation.
- Easy and quick installation with special designed casing.
- Easy installation with several angles and positions.
- Backward curved impeller with high pressure and efficiency.
- Designed to work in humid environment with IP 44 protection class external rotor motor.
- All motors are equipped with thermic protection.
- 230 Volt – 1 Phase – 50Hz.
- Option: Speed Controller.



Static Pressure (Pa)	Air Flow (m ³ /h)										
	CK 100 A	CK 100 C	CK 125 A	CK 125 C	CK 160 B	CK 160 C	CK 200 A	CK 200 B	CK 250 A	CK 315 B	CK 315 C
0	221	290	319	415	493	943	896	1060	871	1269	1555
25	202	271	273	378	459	837	857	1030	832	1242	1520
50	184	252	237	344	426	769	822	1000	793	1214	1485
75	165	232	205	312	393	710	784	965	751	1185	1448
100	147	213	178	282	360	658	745	929	709	1155	1409
125	130	193	152	252	326	610	703	888	665	1123	1369
150	113	173	129	223	293	563	659	845	620	1090	1326
175	97	153	108	195	258	517	612	800	574	1056	1282
200	80	133	87	168	223	471	563	750	527	1019	1237
225	65	113	68	140	188	425	507	698	479	981	1189
250	49	92	49	112	151	377	446	645	429	940	1140
275	34	71	31	84	114	326	384	590	376	896	1088
300		50		56	75	271	318	535	318	851	1035
325						207	234	480	252	801	980
350						120	147	427	163	749	923
375							50	375		683	865
400								323		632	806
450								225		497	685
500								125		345	560
550										181	433
600											304
650											172

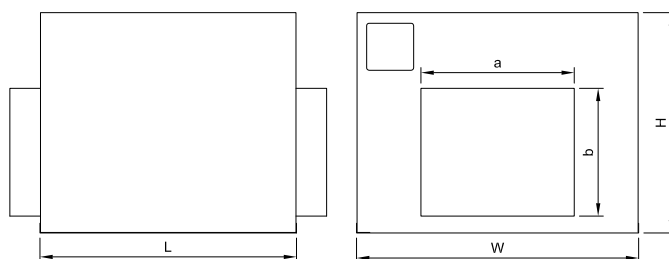
Static Pressure (Pa)	AirFlow (m ³ /h)										
	CK										
	100 A	100 C	125 A	125 C	160 B	160 C	200 A	200 B	250 A	315 B	315 C
0	246	316	351	433	493	841	896	976	879	1410	1632
25	215	299	316	417	473	814	866	955	832	1371	1597
50	191	278	274	390	446	769	832	932	783	1325	1557
75	171	258	218	357	416	718	796	907	737	1279	1518
100	153	236	180	316	381	653	756	882	693	1230	1475
125	136	215	155	275	344	593	712	855	649	1180	1432
150	120	193	135	238	306	537	667	826	603	1129	1388
175	105	172	117	206	269	487	616	796	561	1077	1342
200	90	151	99	177	233	438	563	764	514	1024	1294
225	75	130	81	151	198	391	507	729	468	968	1245
250	60	108	60	125	164	341	446	693	419	910	1194
275	44	87	34	99	129	287	384	652	366	850	1142
300	28	65	2	70	91	221	318	611	308	790	1087
325	10	42		33	41	107	249	566	234	728	1031
350		16					168	517	115	663	973
375							30	462		595	913
400								404		527	852
450								270		385	724
500								120		238	591
550										82	454
600											316
650											176



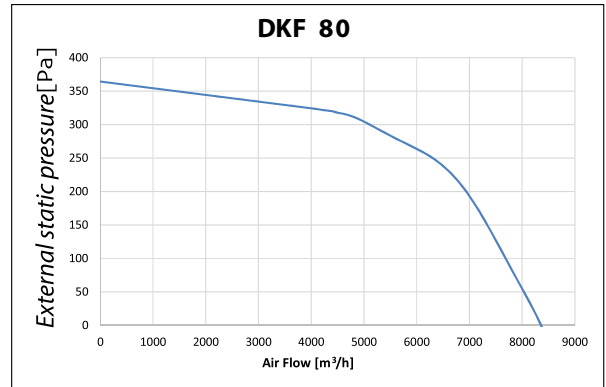
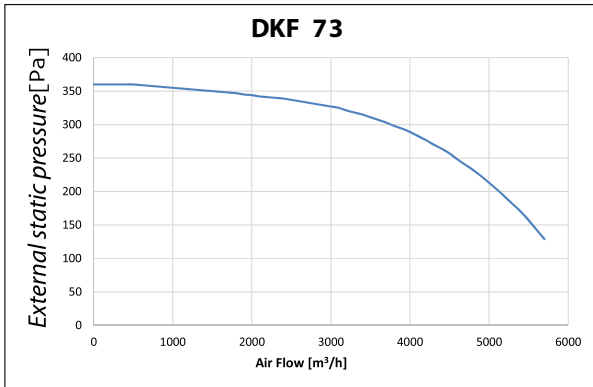
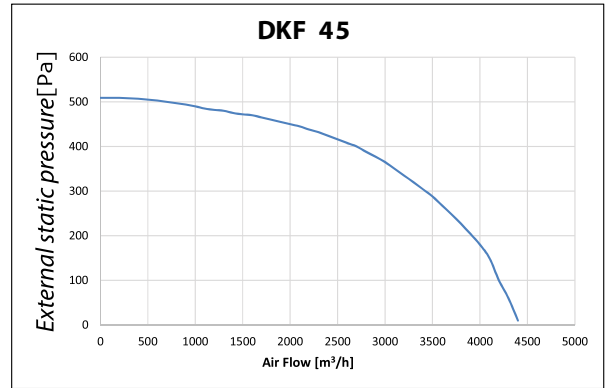
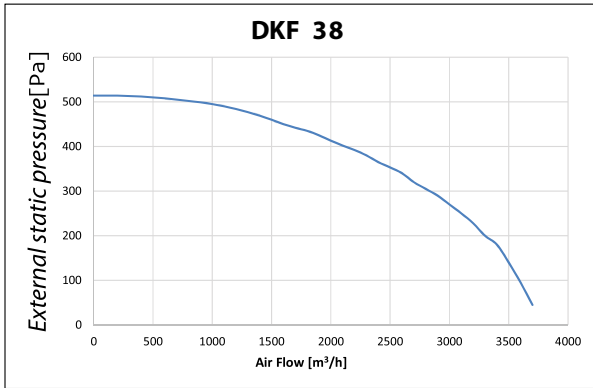
DKF FAN WITH CABINTE UNITS

- Forward curved Galvanized steel impeller.
- Direct driven Fan.
- Suitable for flange connection.
- Single skin casing.
- IP 43 protection class motor with F-class insulation.
- Operating temperature between -20°C to +40°C.
- Options:
 - DKF-E: Epoxy coated casing for outdoor application.
 - DKF-S: 25mm NFAF Acoustic insulation for silent operation.

DYNFLOW Model		DKF 38	DKF 45	DKF 73	DKF 80
Air Flow @ 0 Pa*	m ³ /h	3767	4395	6205	8380
Air Flow @ 150 Pa*	m ³ /h	3454	4053	5390	7316
Electrical Data	230 Volt / 50 Hz / 1 PH				400 Volt / 50 Hz / 3 PH
Fan Power	W	550	550	550	1100
Fan Speed	Rpm	1440	1440	960	960
*External static pressure					



DYNFLOW Model		DKF 38	DKF 45	DKF 73	DKF 80
Length (mm)	L	505	555	655	655
Width (mm)	W	550	600	700	700
Height (mm)	H	435	490	560	560
Weight (kg)	kg	23	30	45.5	53
Duct Connection (mm)	a	300	350	400	400
	b	250	300	300	300



Acoustic Instulation

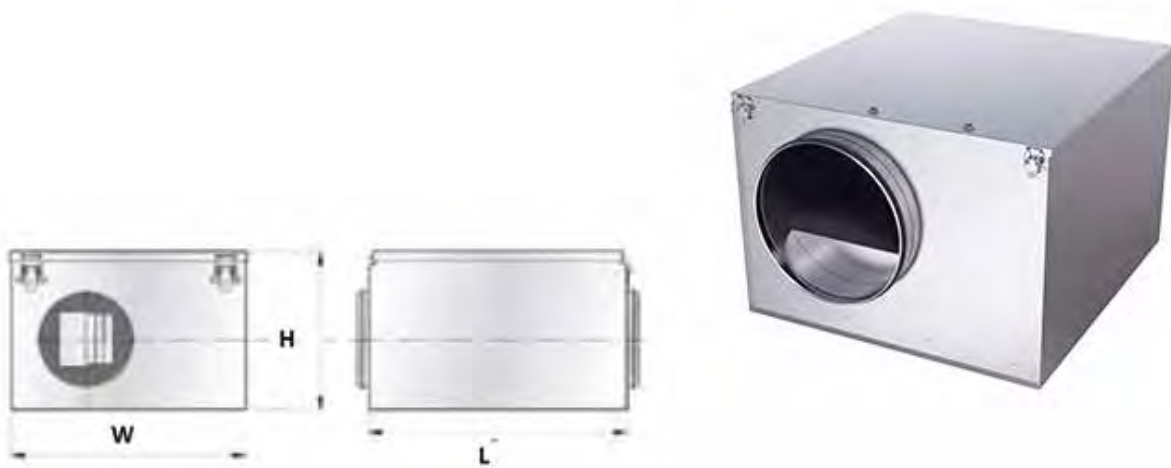
DKS - S series have accoustic instulation with 25mm NFAF inside to provide more silent work.

Weather Proof Type

DKF - E series are epoxy coated and suitable for outdoor use.

IRE & IRB ACOUSTIC INSULATED DUCT TYPE FANS

- Galvanized sheet casing with 50mm-thick glass wool with low noise operation.
- IRE models: Forward curved impeller.
- IRB models: Backward curved impeller.
- Easy to install in several angles and positions.
- High external pressure and efficiency with minimal sound level.
- Fan casing is equipped with hinged access panel for easy service and maintenance.
- IP 44 protection class motor with B-class insulation.
- All motors are equipped with thermic protection.
- 230 Volt – 1 Phase – 50Hz and 400 Volt – 3 Phase – 50Hz motors.
- Maintenance-free bearing.



Model	IRE 125 B1	IRE 160 D1	IRE 250 C1	IRE 315 B1	IRB 355 E3	IRB 400 E3
Specification						
Voltage (V)	230	230	230	230	400	400
Power (kW)	99	164	256	645	397	739
Current (A)	0.42	0.72	1.13	3.00	0.79	1.45
rpm	1650	2220	2120	1330	1340	1440
Weight (kg)	9.7	10.3	14.0	30.8	46.7	68.4
Speed Cont.	VSC 1	VSC 1	VSC 1	VSC 5	VSC 2T	VSC 2T
W (mm)	367	367	471	587	708	808
H (mm)	245	266	342	396	513	567
L (mm)	400	400	400	641	763	908

Model Static Pressure (Pa)	IRE 125 B1	IRE 160 D1	IRE 250 C1	IRE 315 B1	IRB 355 E3	IRB 400 E3
	Air Volume (m ³ /h)					
0	340	555	1040	2120	2927	4260
50	323	523	989	2022	2786	4107
100	305	489	932	1925	2609	3934
150	286	456	869	1806	2419	3754
200	263	422	798	1672	2212	3566
250	231	387	712	1510	1979	3367
300		345	600	1303	1711	3153
350		278	412	958	1390	2920
400			125		977	2656
450						2349
500						1978
550						1475
600						741

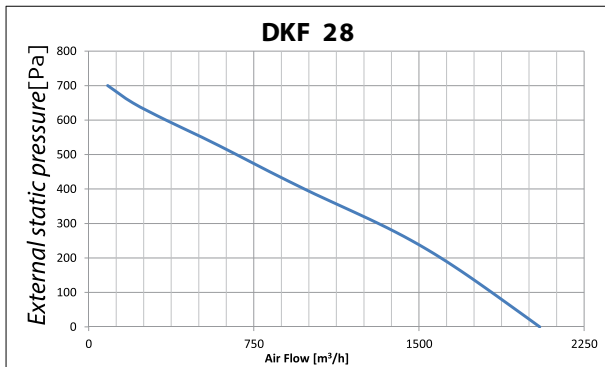
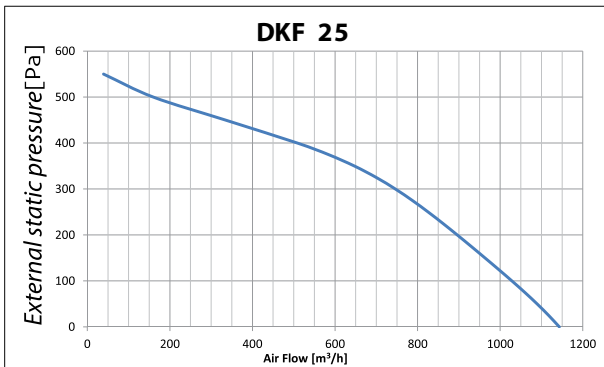
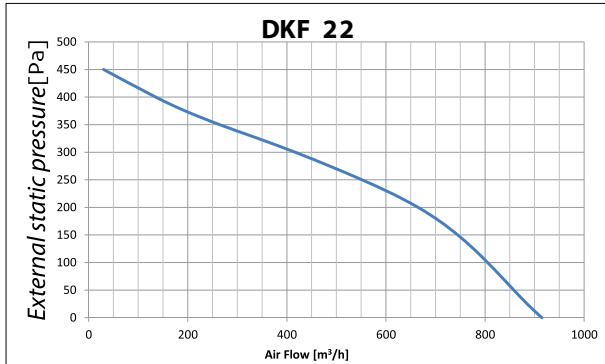
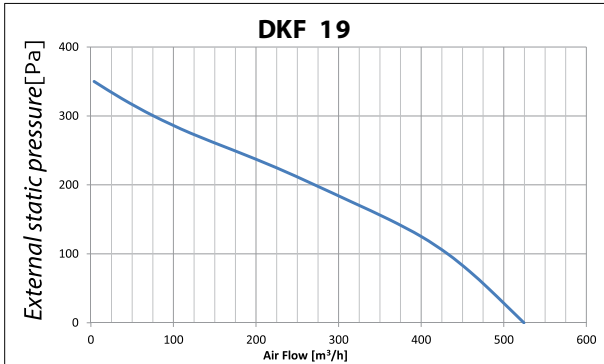
DNF NARROW CASING DUCT TYPE FANS

- Backward curved plastic impeller directly coupled to external rotor motor.
- Galvanized steel casing.
- Single skin casing.
- Hinged Access to the impeller and motor for easy service and maintenance.
- Easy installation with several angles and positions.
- IP 43 protection class motor with F-class insulation.
- Operating temperature between -20°C to +40°C.
- Options:
 - DNF-D: Double inlet.
 - DNF-S: Acoustic insulation for silent operation.
 - Speed controller.



Specification	Model	DNF 19	DNF 22	DNF 25	DNF 28
Voltage (V)		230	230	230	230
Power (W)		52	102	155	225
Current (A)		0.23	0.45	0.68	1
rpm		2350	2500	2500	2700
Weight (kg)		~10	~13	~14	~18
W (mm)		300	400	400	500
H (mm)		220	260	260	360
L (mm)		670	670	670	770
ØD (mm)		125	200	200	300

Static Pressure (Pa)	Model	DNF 19	DNF 22	DNF 25	DNF 28
	Air Volume (m ³ /h)				
0		524	914	1143	2048
25		503	885	1117	1994
50		481	858	1089	1940
75		458	832	1060	1885
100		432	805	1028	1830
125		400	777	996	1775
150		361	745	963	1719
175		316	708	930	1660
200		271	665	896	1600
225		224	612	861	1535
250		173	552	825	1467
275		121	486	787	1394
300		76	417	746	1315
325		38	342	700	1233
350		4	264	647	1147
375			195	584	1062
400			135	509	980
450			30	335	822
500				160	671
550				39	515
600					351
650					200
700					86



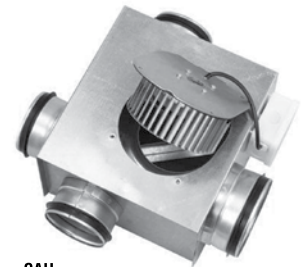
LPK, CAU, IFA NARROW CASING DUCT TYPE FANS

- **LPK Model** – Single inlet and single outlet arrangement fan.
- **CAU Model** – Three inlets and single outlet arrangement fan.
- **IFA Model** – Three inlets and single outlet with acoustic casing arrangement fan.
- Hinged access panel for easy service and maintenance.
- IP 44 protection class external rotor motor.
- Maintenance –free bearing.
- 230 Volt – 1 Phase – 50Hz.
- All motors are equipped with thermic protection.
- Compact design.

Static Pressure (Pa)	AirFlow (m ³ /h)					
	LPK 100 B	LPK 125 B	LPK 160 D	LPK 200 B	CAU 125 C	IFA 140 D
0	266	373	531	927	403	506
50	246	345	507	856	375	488
100	228	320	480	759	352	470
125	219	307	467	695	340	458
150	209	293	452	615	328	448
175	199	278	437	516	316	436
200	187	260	421	397	302	423
225	173	239	403	270	287	409
250	155	210	385	134	270	393
275	130	163	364		249	374
300	93	72	341		221	353
325			315		178	326
350			282		121	293
375			239		67	235
400			157			5



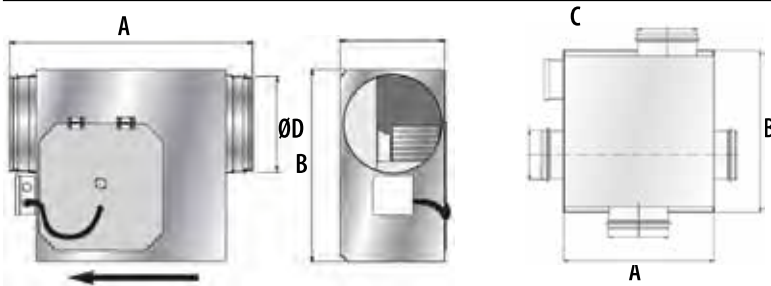
LPK



CAU



IFA

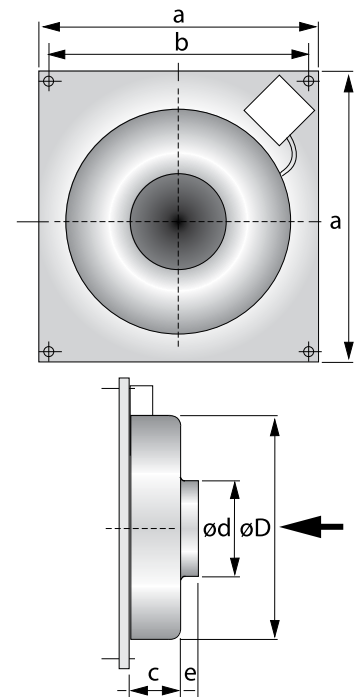


MODEL	Current (A)	Power (kW)	RPM	Max.Temp. (C)	Sound Level dB(A)@3m	Weight (kg)	A [mm]	B [mm]	C [mm]	ØD [mm]	Speed Cont.
LPK 100 B	0.34	77	1800	50	44	3,5	250	272	122	100	VRS1
LPK 125 B	0.44	100	1450	55	48	3,8	250	272	152	125	VRS1
LPK 160 D	0.72	162	2150	45	49	4,6	250	272	186	160	VRS1
LPK 200 B	0.76	170	1100	60	50	5,2	400	402	220	200	VRS1
CAU 125 C	0.53	120	1750	40	41	4,7	250	272	182	100-125	VRS1
IFA 140 D	0.63	156	2200	50	36	8 3	315	355	220	100-125	VRS1

KV SQUARE FRAMED WALL TYPE FANS

- 7 different models with 5 different sizes from Ø100 mm to Ø315 mm diameters.
- Compact design.
- Backward curved impeller with high pressure and efficiency.
- Designed to work in humid environment with IP 44 protection class external rotor motor.
- IP 54 electrical connection box.
- All motors are equipped with thermic protection.
- 230 Volt – 1 Phase – 50Hz.
- Option: Speed Controller.

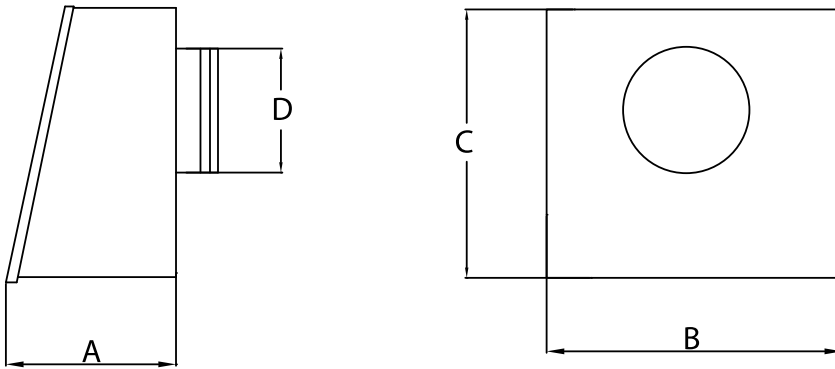
Static Pressure (Pa)	Air Flow (m ³ /h)						
	KV 100 A	KV 125 C	KV 160 C	KV 200 A	KV 200 B	KV 315 B	KV 315 C
0	309	448	865	925	1063	1220	1775
50	245	390	791	840	1004	1165	1647
100	191	330	712	750	939	1112	1520
125	166	300	670	702	905	1082	1457
150	143	269	626	653	868	1051	1394
175	121	237	581	601	829	1017	1326
200	99	205	532	546	788	982	1263
225	79	172	481	489	745	944	1200
250	59	139	427	428	698	904	1137
275	40	105	368	363	650	862	104
300			305	292	598	816	1011
325			234	214	545	766	950
350			153	126	489	712	887
375			55	24	430	653	825
400					370	589	763
450					250	446	641
500					137	289	519
550					37	136	398
600							278
650							159



MODEL	Current (A)	Power (kW)	RPM	Max.Temp. (C)	Sound Level dB(A)@3m	Weight (kg)	Ød	ØD	a [mm]	b [mm]	c [mm]	e [mm]	Speed Cont.
KV 100A	0.18	41	1730	80	36	2,5	100	240	310	295	111	24	VRS1
KV 125C	0.27	62	2320	70	43	2,5	125	240	310	295	111	24	VRS1
KV 160C	0.44	100	2480	65	50	4,0	160	342	400	385	128	26	VRS1
KV 200A	0.5	115	2580	60	47	4,1	200	342	400	385	127	34	VRS1
KV 200B	0.69	158	2500	60	49	4,8	200	342	400	385	127	34	VRS1
KV 250C	0.84	192	2420	50	49	4,9	250	342	400	385	126	33	VRS1
KV 315B	0.84	190	2465	50	48	5,6	315	400	460	445	158	34	VRS1
KV 315C	1.19	274	2500	50	51	6,0	315	400	460	445	158	34	VRS1

RS WALL TYPE FANS

- Wall-Mount fan to provide space saving.
- IP 44 protection class external rotor motor.
- All motors are equipped with thermic protection.
- Maintenance-free bearing.
- 230 Volt – 1 Phase – 50Hz.
- High corrosion resistance casing.
- Options:
 - Speed Controller.
 - Acoustic insulation.



MODEL	RS100A	RS125C	RS160C
A [mm]	122	122	147
B [mm]	230	230	332
C [mm]	252	252	310
D [mm]	100	125	160
Power (kW)	48	73	104
Current (A)	0.21	0.32	0.46
RPM	1830	2460	2480
Sound Level [dB(A)@3m]	56	62	64
Weight (kg)	3,4	3,4	5
Max.Temp.(°C)	80	70	65
Speed Cont.	VRS1	VRS1	VRS1

Static Pressure (Pa)	AirFlow (m ³ /h)		
	RS100A	RS125C	RS160C
0	195	246	850
50	154	212	749
100	115	180	662
150	75	145	577
200	42	107	482
250		67	368
300			243
350			129