

FAN ACCESSORIES

MK

Mounting clamps.

MP

Mounting plate.

BSV

Wire mesh.

RSK

Circular one-way damper.

NRK

circular one-way damper.

DK

Back draft shutter.

EBY

Circular flexible connection.

EBD

Rectangular flexible connection.

MC

Roof fan mounting baseframe.

SDS

Mounting baseframe with silencer.

NRD, XS, SHS

Vibration absorber mountings.

RTR / DRTE / DRS

Speed controller.

MFL

Counter flange.

MFT

Mounting bracket.

MSC

Wire guard.

FLC / FLR

Filter box.

NRDO

Circular back draft damper for axial fans.

BDD

Circular back draft damper for roof type axial fans.

MPT

Mounting plate.



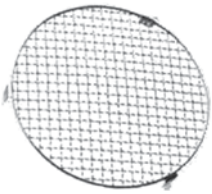
MK Mounting Clamps

- Fan inlet and outlet is appropriate to the diameter of 100, 125, 160, 200, 315 as standard.
- Galvanised steel sheet, the neoprene gasket.



MP Mounting Plate

- CK series is used on the wall or ceiling fan installation.
- It is from galvanised sheet.

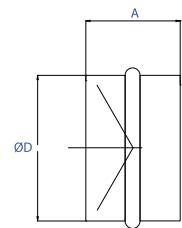


- They are used at fan inlets.
- Galvanised as standard.



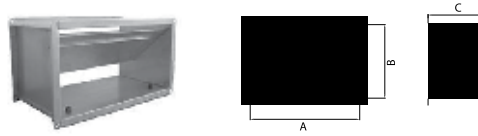
RSK Circular One-Way Damper

- Standard diameters at fan inlet and outlets.
- Galvanised casing and aluminum damper. The damper open when there is and
- outflow when it is stops the damper closes by a spring.



(ØD)	100	125	160	200	250	315	355	400
A (mm)	100	120	150	180	200	200	250	300

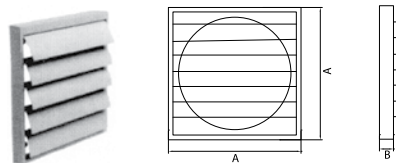
NRK Rectangular One-Way Damper



- At the dimensions suitable to fan inlet and outlets.
- Galvanised steel casing and aluminum damper.
- The damper open when there is an Airflow when is stops the damper closes by it weight.

FLK (AxB)	400x200	500x250	500x300	600x300	600x350	700x400	800x500	1000x500
A (mm)	400	500	500	600	600	700	800	1000
B (mm)	200	250	300	300	350	400	500	500
C (mm)	250	300	350	350	400	450	550	550

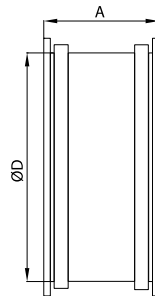
DK Air Flow Shutter



- Opening closing shutter by air movement.
- Polymer casing and shutter.

DK	10	12	16	20	25	30	35	40	45	50	63	71
A (mm)	149	149	190	240	290	340	390	440	490	540	696	760
B (mm)	20	20	26	28	28	28	28	28	28	28	43	43

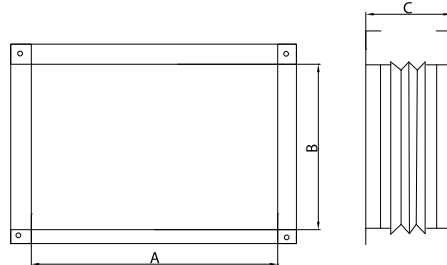
EBY Circular Flexible Connection



- It's prevents the vibration transfer from the running unit to the duct system.
- At the dimensions suitable to fan Inlet and outlets.
- Material is resistant up to 70°C for standard fans, up to 400°C for smoke exhaust fans.

EBY (ØD)	350	400	450	500	560	630	710	800	900	1000
A (mm)	150	150	150	150	150	200	200	200	200	250

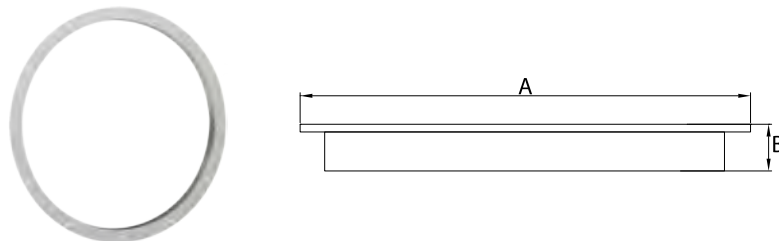
EBD Rectangular Flexible Connection



- It prevents the vibration to transfer from the running unit to the duct system.
- At the dimensions suitable to fan inlet and outlets.
- Both side galvanised steel flanges and polyster in between.

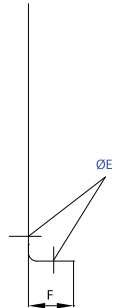
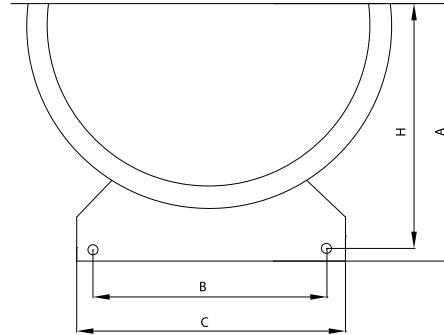
EBD (AxB)	400x200	500x250	500x300	600x300	600x350	700x400	800x500	1000x500
A (mm)	400	500	500	600	600	700	800	1000
B (mm)	200	250	300	300	350	400	500	500
C (mm)	150	150	150	150	150	150	150	150

MFL Counter Flanges



- The dimensions are suitable to the fan diameter.
- Galvanised.

MFL	355	400	450	500	560	630	710	800	900	1000	1120	1250	1400	1600
A (mm)	410	475	530	585	645	715	795	885	1000	1100	1240	1380	1540	1750
B (mm)	30	37.5	40	42.5	42.5	42.5	42.5	42.5	50	55	60	65	70	75



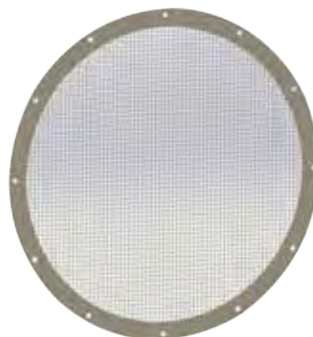
MFT Mounting Bracket

- Mounting bracket hot-dip galvanised steel.
- Galvanised as standard, optionally epoxy coated.

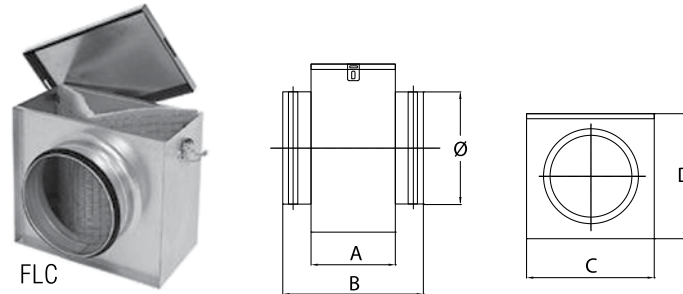
MFT	355	400	450	500	560	630	710	800	900	1000	1120	1250	1400	1600
A (mm)	230	250	280	325	355	400	450	500	560	630	700	780	800	950
B (mm)	260	350	400	450	510	580	660	750	850	950	1120	1230	1400	1500
C (mm)	310	400	450	500	560	630	710	800	900	1000	1070	1180	1300	1600
D (mm)	3	4	4	4	5	5	5	5	5	5	5	5	5	5
E (mm)	10	9	10	11	11	11	11	11	11	13	13	13	13	19
F (mm)	40	50	50	50	60	60	60	60	70	70	70	70	70	70
H (mm)	210	230	255	290	330	375	425	475	530	595	665	745	845	900

MSC Wire Guard

- They are used at fans inlets and or fan outlets.
- Galvanised as standard.

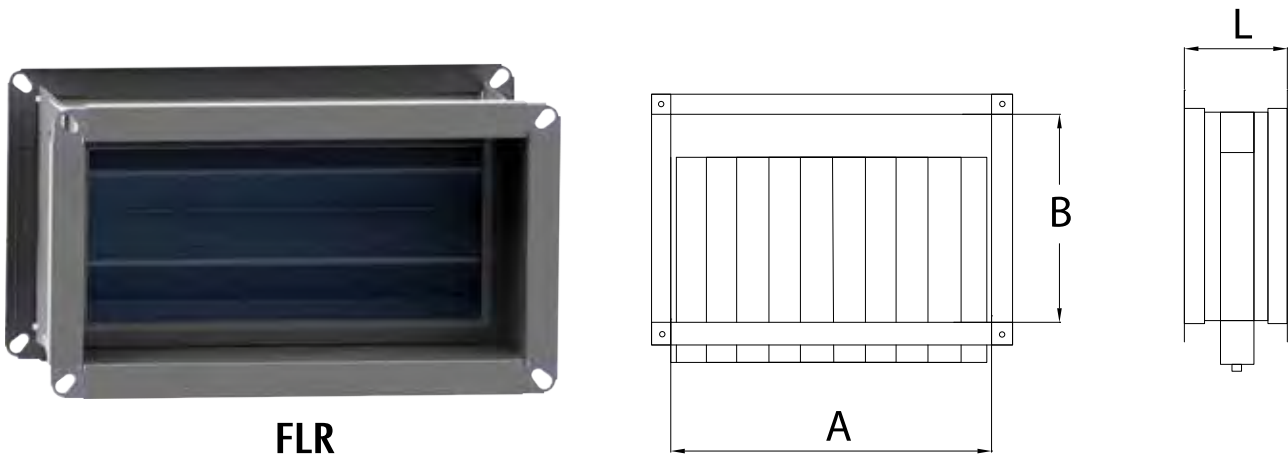


FLC / FLR Filter Boxes



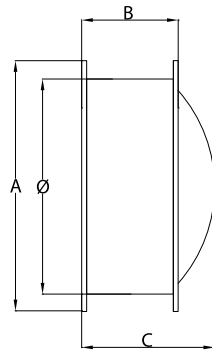
- It is suitable to fan inlet dimension.
- Galvanised steel casing.
- Suitable to circular duct connection.
- G3 or G4 filter.
- Higher class filter options.
- Easy service and cleaning with openable cover.

FLC	100	125	160	200	250	315	400
A (mm)	120	140	155	180	230	330	455
B (mm)	227	252	267	302	352	452	587
C (mm)	205	215	265	315	365	425	515
D (mm)	170	205	235	275	325	390	495



FLR (AxB)	400x200	500x250	500x300	600x300	600x350	700x400	800x500	900x500	1000x500
L (mm)	250	250	250	250	250	250	250	250	250

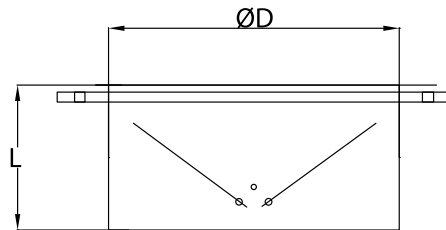
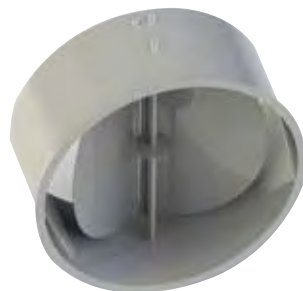
NRDO Axial Fans for Round Back Draft



- It is selected according to the table below suitable to the fan model.
- Galvanised steel casing and aluminum damper.
- The damper is open when there is an Airflow when it Stops, The damper closes by its weight.
- It works vertically or horizontally.

NRD	350	400	450	500	560	630	710	800	900	1000
A (mm)	410	480	530	580	640	710	790	880	1000	1100
B (mm)	220	220	220	220	220	250	250	300	300	420
C (mm)	250	270	295	315	375	420	470	525	590	646

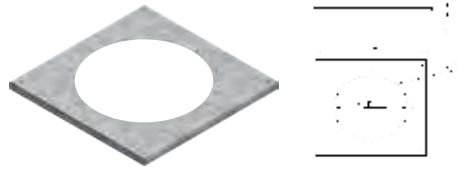
BDD For Roof Fans Circular Back Draft Damper



- It is selected according to the table below suitable to the fan model.
- Galvanised steel and aluminum damper.
- The damper open when there is an airflow when it stops, The damper closes by its weight.
- It works vertically.

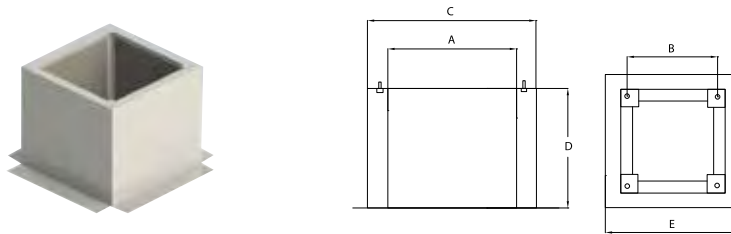
BDD	MINI 300	MINI 400
ØD	160	160
L (mm)	142	142
Fan	TKS 300	TKS 400 TKK 400

Ø d1	200	240	255	275	280	280	355	375	375	375	460	500	500	550	500	580
L (mm)	180	142	142	142	182	182	200	200	200	200	307	307	307	307	307	307
MODEL	DCF 220 V1	DCF 225 V1	DCF 250 V1	DCF 280 R1	DCF 280 R1 EC	DCF 220 V1	DCF 355 V1 EC	DCF 400 V1	DCF 400 V1 EC	DCF 400 V3 EC	DCF 450 V1	DCF 450 V3	DCF 500 R3 EC	DCF 500 V3	DCF 500 V3 EC	DCF 560 V3



MPT	400	450	500	500	630	710	800	900	1000	1120	1250	1400	1600
A (mm)	625	680	735	795	865	945	1035	1150	1250	1365	1500	1650	1860
B (mm)	400	450	500	560	630	710	800	900	1000	1120	1250	1400	1600
C (mm)	12	12	12	12	12	12	12	15	15	15	15	15	19
G (mm)	8	8	12	12	12	16	16	16	16	20	20	20	24
E (mm)	35	35	35	35	35	35	35	35	35	35	35	35	35

MC Roof Fan Mounting Bases Frame



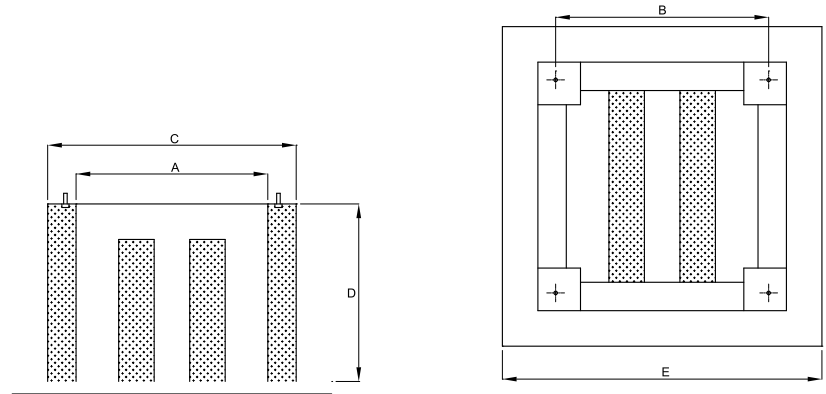
- Galvanised Steel Casing.
- Internally Insulated By Glass Fiber Coverd Rock Wool to Prevent Condensation and to Decrease The Noice Level.

MC	MINI 300	MINI 400
A (mm)	195	300
B (mm)	-	-
C (mm)	295	405
D (mm)	350	350
E (mm)	510	620
Fan Type	TKS 300	TKS 400 TKK 400

A (mm)	341	360	360	569	607	626	678	739
B (mm)								
C (mm)	441	460	460	669	707	716	778	839
D (mm)	500	500	500	500	500	500	500	500
E (mm)	630	649	649	858	896	915	967	1028
	DCF 250 V1	DCF 280 R1	DCF 280 V1	DCF 400 V1	DCF 450 V1	DCF 450 V3	DCF 500 V3	DCF 560 V3

A (mm)	324	324	385	455	495	511	597	634
B (mm)								
C (mm)	424	424	485	555	595	611	697	734
D (mm)	500	500	500	500	500	500	500	500
E (mm)	613	613	674	744	784	800	800	922
	DCF EC 220 V1	DCF EC 225 V1	DCF EC 280 R1	DCF EC 355 V1	DCF EC 400 V1	DCF EC 400 V3	DCF EC 500 V3	DCF EC 500 R3

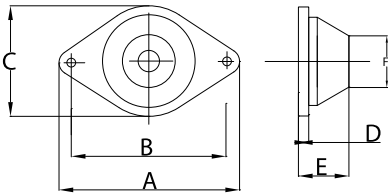
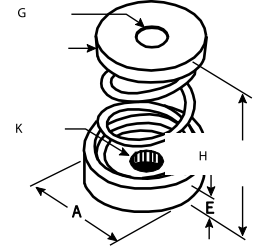
SDS Roof Fan Silencer Mounting Bases Frame



- Galvanised Steel Casing.
- Glass Fiber Coverd Rock Wool Panels insulation Material is Appropriate to DIN 1402 Norm and A2 Class Non Combistiable Type.

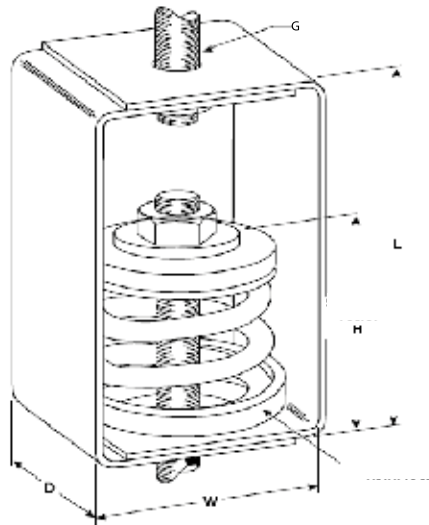
A (mm)	341	360	360	569	607	626	678	739
B (mm)								
C (mm)	441	460	460	669	707	716	778	839
D (mm)	500	500	500	500	500	500	500	500
E (mm)	630	649	649	858	896	915	967	1028
	DCF 250 V1	DCF 280 R1	DCF 280 V1	DCF 400 V1	DCF 450 V1	DCF 450 V3	DCF 500 V3	DCF 560 V3

A (mm)	324	324	385	455	495	511	597	634
B (mm)								
C (mm)	424	424	485	555	595	611	697	734
D (mm)	500	500	500	500	500	500	500	500
E (mm)	613	613	674	744	784	800	800	922
	DCF EC 220 V1	DCF EC 225 V1	DCF EC 280 R1	DCF EC 355 V1	DCF EC 400 V1	DCF EC 400 V3	DCF EC 500 V3	DCF EC 500 R3



Model	Kg	A (mm)	B (mm)	C (mm)	D (mm)	E (mm)	F (mm)
NRD1	40	80	60	45	5	35	M8
NRD2	100	98	76	60	6	44	M10

Model	Kg	H (mm)	A (mm)	E** (mm)
XS-12/50	50	84	60	12
XS-13/75	75			
XS-14/125	125			
XS-16/175	175			
XS-17/200	200			



Model	Kg	H (mm)	L (mm)	W (mm)	D (mm)	G (max mm)
XS-12/50	50	86	130	75	65	12
XS-13/75	75					
XS-14/125	125					
XS-16/175	175					
XS-17/200	200					