

SILENCERS

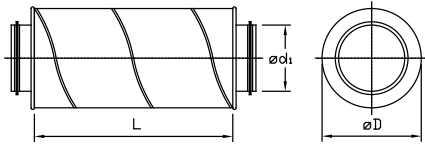


DYNFLOW Duct Silencers are Classified Into Two Groups As SL Models For Circular Duct and LN-Models For Rectangular Duct Systems. SL Models Are Produced With The Standard Diameters Of Spiral Duct (100, 125, 150, 200, 1250,,,,) LN Models are Produced With The Dimesions As Required. All DYNFLOW Silencers Can be Installed To The Ductwork Systems. Rockwool is Standard Material for Sound Attenuation.



- Air ducts and fittings have tight tolerance, by production with full-automatic machines.
- For circular silencers : the airtight system, by using EPDM Rubber or Seaking.
- For rectungular: minimum air leakage, by self-fitted flanged.
- Fast and easy installation.
- For specific application, material alternatives, galvanised aluminum, staniless steel.
- High sound attenuation with rockwool insulation.
- specifications of insulations : fire resistance with rspect to DIN 1402, classified ad A2 group non - combustible.

Circular Straight Silencers

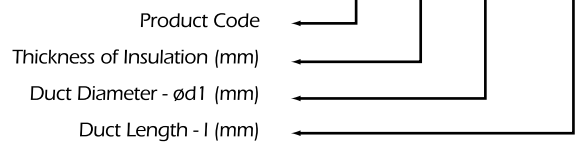


Sound Attenuation (dB)
Circular Silencers SL 10

ød1 (mm)	øD (mm)	L (mm)				
		300	600	900	1200	1500
100	300	13	19	26	30	
125	315	10	19	26	29	
160	355	8	15	21	29	
200	400	6	15	21	27	
250	450		13	18	21	
315	500		8	12	16	
400	600		6	10	13	
500	710			8	12	
630	800			8	11	
800	1000				8	10

Rockwool
noctave bands 250 Hz.
P.S. : Contact us for the different silencer size and attenuation

Nomenclature SL 05 160 600



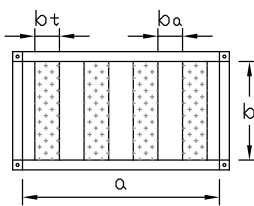
Product Code	Insulation Type
SL	Rockwool
SLG	Glasswool
SLB	Rockwool - Baffle
SLGB	Glasswool Baffle

Sound Attenuation (dB)
Circular Silencers SL 05

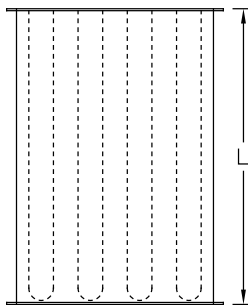
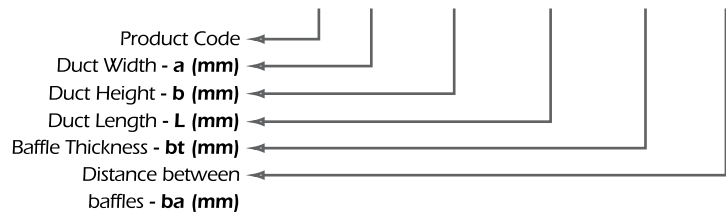
ød1 (mm)	øD (mm)	L (mm)			
		300	600	900	1200
100	200	8	13	18	22
125	224	7	12	16	18
160	250	5	8	12	14
200	300	4	8	10	13
250	355		6	8	10
315	400		7	9	12

Rockwool
noctave bands 250 Hz.

Rectangular Straight silencers

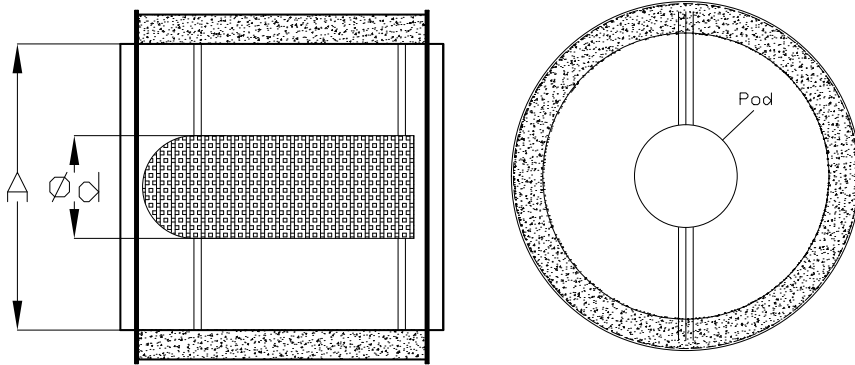
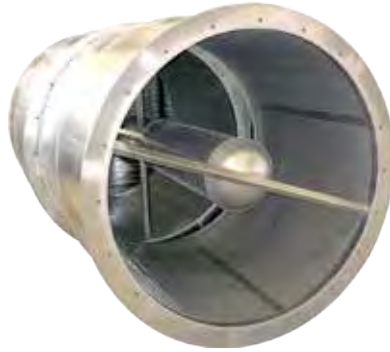


Nomenclature LN 800 x 500 x 1000 x 200 x 100



Silencer Type	a [mm]	b [mm]	L [mm]	Panel/Baffle		Sound Atten [dB]
				[adet/piece]	[mm]	
LN 400x200x600x100x100	400	200	600	2	100	9
LN 500x250x600x100x100	500	250	600	2	100	9
LN 500x300x600x100x100	500	300	600	2	100	9
LN 600x300x600x100x100	600	300	700	3	100	9
LN 600x350x600x100x100	600	350	800	3	100	10
LN 700x400x600x100x100	700	400	800	3	100	13
LN 800x500x600x100x100	800	500	1000	4	100	15
LN 1000x500x600x100x100	1000	500	1000	5	100	15

P.S. : Contact us for the different silencer size and attenuation.



Sound power level attenuation values

Fan size	Lenght	Silencer type	Octave bands (Hz)					
			125	250	500	1K	2K	4K
350	1D	with pod	6	8	11	18	19	17
		without pod	5	6	9	13	11	6
400	2D	with pod	10	12	21	26	26	24
		without pod	8	12	17	23	17	12
500	1D	with pod	6	8	17	23	20	18
		without pod	4	9	15	15	8	7
560	2D	with pod	11	16	27	32	31	29
		without pod	8	13	22	22	13	12
630	1D	with pod	6	11	20	18	15	13
		without pod	4	9	14	13	7	7
710	2D	with pod	11	18	26	27	26	22
		without pod	8	13	21	18	12	11
800	1D	with pod	6	11	20	18	15	13
		without pod	4	9	14	13	7	7
900	2D	with pod	11	18	26	27	26	22
		without pod	8	13	21	18	12	11
1000	1D	with pod	6	11	20	18	15	13
		without pod	4	9	14	13	7	7
1250	2D	with pod	11	18	26	27	26	22
		without pod	8	13	21	18	12	11

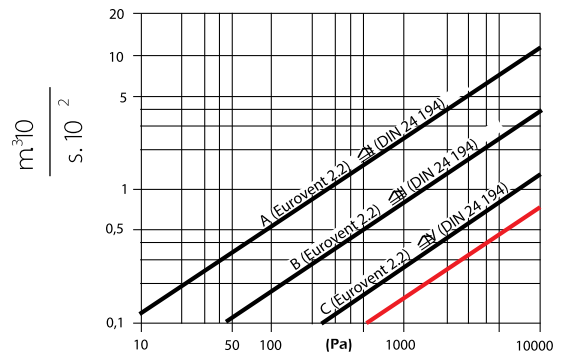


- Air Ducts and Fitting Have Tight Tolerance, By Production with Full-Automatic Machiens.
- The Airtight System, By Using EPDM Rubber For Sealing (TSEprEN 12237)
- High Strength, By Producing Spiral Lock Seam Ducts.
- The Wide Range Of Products, With Diameters Between 100~1600mm.
- Temperature Resistant From -30°C to +100°C.
- With Stands Positive Pressure Up To 3000 Pa.
- Fast and Easy Installation.
- For Specific Application, Material Alternatives; Galvanized, Aluminum, Stainless Steel.



Standard Dimeters (mm)

∅ 100	∅ 224	∅ 400	∅ 710
∅ 125	∅ 250	∅ 450	∅ 800
∅ 150	∅ 280	∅ 500	∅ 900
∅ 160	∅ 300	∅ 560	∅ 1000
∅ 180	∅ 315	∅ 600	∅ 1120
∅ 200	∅ 355	∅ 630	∅ 1250



Meeting The Requirements of Standards SMACNA & DW 144. Fast and Regular Production With Automatic Machiens. Minmum Air Leakage, By Factory-Fitted Flanged Systems(TSEprEN 1506). Producing Pittsburgh Lock Seam Ducts on Automatic Machiens.